

# WHAT WILL YOUR LINE ACTUALLY BREAK AT?

An essential  
guide to nylon,  
flourocarbon and  
braided main lines.



FOR ADVICE ON WHAT'S BEST FOR YOU CALL 01322 292400 // [WWW.TACKLEBOX.CO.UK](http://WWW.TACKLEBOX.CO.UK)

## WHAT LINE IS BEST FOR YOU?

*As so many lines are labelled the same but behave very differently, we suggest buying line by diameter rather than by the breaking strain on the label.*

### **For weed and snag free situations...**

We recommend lines of between 0.33mm and 0.35mm. These will usually break between 16lb and 18lb.

### **For waters with snags and heavy weed...**

Thicker lines of between 0.35mm and 0.40mm will have better abrasion resistance and be stronger, usually breaking between 20lb and 22lb.

### **For distance casting...**

Lower diameter lines of 0.25mm to 0.30mm generally enable longer casts and will usually break between 10lb and 15lb.

### **One last thing...**

Remember, diameter and breaking strain do not give the complete picture. Cost, suppleness, abrasion resistance and value for money should also be considered.



## WHAT BRAID IS BEST FOR YOU?

*Braid can be an essential part of any angler's tackle, but there are a few things to consider when choosing which one to buy...*



### **FLOATING BRAID**

Ideal for marker float use, spodding / spombing or drifting and lure fishing for pike.

### **SINKING BRAID**

Ideal for pinning down main line when a much less detectable approach is required.

### **Braid, the pros...**

Most braids are exceptionally thin, making them superior casting lines, and have virtually no stretch, which improves bite indication, makes them more sensitive for feature finding and ideal for spodding / spombing. Braids generally deteriorate a lot more slowly than nylon or fluorocarbon, so the need to re-spool is less and it is also less troublesome with line twist.

### **Braid, the cons...**

Care must be taken when spooling new braid. It is important not to overfill your reels otherwise wind knots will occur, and it is best loaded on to your spools wet and under tension. The lack of stretch in braid can result in fish losses due to hook pulls or hook link breakages, so extra care needs to be taken when playing fish, and this zero stretch can also result in a broken rod if the braid gets wrapped around rings during casting or general handling.

## WHAT WILL YOUR LINE ACTUALLY BREAK AT?

*Almost every line commonly used for carp fishing has an under-rated breaking strain indicated on the spool or box. With a good knot, most lines will always break at a higher strain.*

With no international guidelines for indicating breaking strain or diameter, most manufacturers underrate lines to different degrees. A line labelled 12lb by one company may consistently break around 20lb, whereas a line labelled 12lb by a different company may regularly break at just 14lb. To give a better idea of the specifications of the main lines that we sell we have tested breaking strains and diameters ourselves.

### **How we measure the breaking strain**

We took line from different points on the spool and measured breaking strains five times using our own custom and precision made line tester, and diameters using a high quality digital calliper. Breakage tests were conducted with five turn grinner knots and a knotless knot to mimic what the average angler uses. Braid diameters shown below are as accurate as possible, but unlike nylon lines, some braids do not have round profiles. Each spool of line was tested brand new, but we accept that the performance of most lines varies with age, and that different batches of lines supplied to shops may show slight differences in performance. However we hope the chart will provide useful general guidance.



## NYLON MAIN LINES

A monofilament line is made from nylon; there are many variations of nylon lines that have different properties.

**PROPERTIES - Nylon v Fluorocarbon:** Lighter - Good distance casting line - Less abrasion resistant - Can absorb water up to 7% changing the character, noticeably more subtle - deteriorates with UV exposure - More stretch - More tolerant to knotting - Very affordable

MAKE OF LINE	Stated Strain	Average Strain	Stated Diameter	Measured Diameter
<b>Avid Carp Outline</b>	12lb	14.78lb	0.31mm	0.31mm
<b>Camo Reel Line 1000m</b>	15lb	16.21lb	0.33mm	0.32mm
<b>Avid Carp Outline Mono Reel Line</b>	12lb	13.82lb	0.32mm	0.32mm
	15lb	15.51lb	0.35mm	0.34mm
	18lb	19.85lb	0.37mm	0.37mm
<b>Berkley Big Game Green</b>	10lb	13.88lb	0.31mm	0.30mm
	12lb	15.75lb	0.36mm	0.34mm
	15lb	20.75lb	0.38mm	0.38mm
	25lb	25.96lb	0.48mm	0.47mm
	30lb	40.46lb	0.56mm	0.55mm
<b>Berkley Big Game Bulk Clear</b>	25lb	24.12lb	0.50mm	0.48mm
	30lb	27.74lb	0.48mm	0.55mm
<b>Berkley Big Game Bulk Green</b>	20lb	20.83lb	0.46mm	0.45mm
	15lb	20.75lb	0.38mm	0.38mm
<b>Berkley Connect CM70 Mono</b>	12lb	17.07lb	0.34mm	0.32mm
	15lb	21.03lb	0.38mm	0.37mm
<b>Berkley Connect CM90 Mono</b>	12lb	15.27lb	0.34mm	0.33mm
	15lb	19.29lb	0.38mm	0.35mm
<b>Daiwa Sensor Brown</b>	4lb	5.88lb	0.205mm	0.20mm
	6lb	8.5lb	0.235mm	0.22mm
	8lb	10.75lb	0.26mm	0.25mm
	10lb	14.63lb	0.31mm	0.30mm
	12lb	16.5lb	0.33mm	0.32mm
	15lb	17.63lb	0.37mm	0.36mm
	18lb	21.63lb	0.405mm	0.40mm
	20lb	25lb	0.435mm	0.43mm
	25lb	31lb	0.520mm	0.51mm
	30lb	32.13lb	0.570mm	0.57mm
<b>Daiwa Sensor Clear</b>	8lb	10.12lb	0.26mm	0.25mm
	10lb	15.87lb	0.31mm	0.30mm
	12lb	16.75lb	0.33mm	0.32mm
	15lb	21.37lb	0.37mm	0.35mm
	18lb	24.25lb	0.405mm	0.40mm
<b>Drennan Specimen Camo XT</b>	6lb	8.51lb	0.23mm	0.24mm
	8lb	9.50lb	0.26mm	0.26mm
	10lb	10.44lb	0.28mm	0.28mm
<b>E-S-P Syncro XT</b>	10lb	14lb	0.30mm	0.29mm
	12lb	15.75lb	0.33mm	0.31mm
	15lb	21.75lb	0.37mm	0.35mm
	18lb	21.63lb	0.40mm	0.39mm
<b>E-S-P Syncro Loaded XT</b>	10lb	12.84lb	0.30mm	0.31mm
	12lb	14.64lb	0.33mm	0.33mm
	15lb	18.34lb	0.37mm	0.37mm
	18lb	21.99lb	0.40mm	0.40mm
<b>E•S•P Crystal Carp Mono</b>	10lb	11.13lb	0.30mm	0.31mm
	12lb	13.38lb	0.325mm	0.32mm
	15lb	15lb	0.35mm	0.36mm
	18lb	17.63lb	0.375mm	0.375mm

MAKE OF LINE	Stated Strain	Average Strain	Stated Diameter	Measured Diameter
<b>E•S•P Olive</b>	10lb	11lb	0.30mm	0.28mm
<b>Carp Mono</b>	12lb	12.63lb	0.325mm	0.30mm
	15lb	14.13lb	0.35mm	0.32mm
	18lb	16.5lb	0.375mm	0.35mm
<b>Fox Adaptive Camouflage Soft Steel</b>	13lb	11.9lb	0.31mm	0.29mm
	16lb	12.7lb	0.33mm	0.32mm
	18lb	13.02lb	0.35mm	0.33mm
<b>Fox Exocet Green</b>	13lb	14.67lb	0.309mm	0.29mm
	16lb	14.22lb	0.331mm	0.32mm
	18lb	16.36lb	0.35mm	0.33mm
<b>Fox Exocet Pro Monofilament 1000m</b>	16lb	15.65lb	0.331mm	0.32mm
	18lb	18.24lb	0.35mm	0.34mm
	20lb	15.27lb	0.37mm	0.36mm
<b>Fox Exocet Trans Khaki</b>	13lb	12.79lb	0.309mm	0.31mm
	16lb	14.02lb	0.331mm	0.32mm
	18lb	16.38lb	0.350mm	0.34mm
	20lb	18.93lb	0.37mm	0.37mm
<b>Fox Soft Steel Dark Camo</b>	13lb	13.31lb	0.309mm	0.30mm
	16lb	14.39lb	0.331mm	0.32mm
	18lb	15.49lb	0.350mm	0.34mm
<b>Fox Soft Steel Light Camo</b>	13lb	13.49lb	0.309mm	0.30mm
	16lb	13.54lb	0.331mm	0.32mm
	18lb	14.44lb	0.350mm	0.34mm
<b>Fox Soft Steel Camo</b>	10lb	13.5lb	0.286mm	0.28mm
	12lb	13.63lb	0.309mm	0.31mm
	15lb	15lb	0.331mm	0.33mm
<b>Fox Soft Steel Camo Fleck</b>	16lb	15.78lb	0.33mm	0.32mm
	18lb	16.19lb	0.35mm	0.35mm
	20lb	18.35lb	0.37mm	0.37mm
<b>Fox Surface</b>	12lb	12.96lb	0.28mm	0.27mm
	15lb	15.16lb	0.30mm	0.30mm
<b>Gardner GR60 Green</b>	12lb	15.76lb	0.35mm	0.34mm
	15lb	17.84lb	0.40mm	0.39mm
<b>Gardner GR60 Clear</b>	12lb	17.76lb	0.35mm	0.34mm
	15lb	20.36lb	0.40mm	0.39mm
<b>Gardner GT-HD Low Vis Green</b>	12lb	15.29lb	0.33mm	0.32mm
	15lb	14.30lb	0.35mm	0.33mm
	18lb	21.45lb	0.39mm	0.37mm
<b>Gardner Hydro Tuff</b>	12lb	18.44lb	0.35mm	0.34mm
	15lb	19.80lb	0.38mm	0.37mm
<b>Gardner Pro Light Blend</b>	12lb	14.29lb	0.30mm	0.30mm
	15lb	15.49lb	0.35mm	0.34mm
<b>Gardner Pro</b>	12lb	14.29lb	0.30mm	0.30mm
	15lb	15.49lb	0.35mm	0.34mm
<b>Gold Label Pro Clear</b>	10lb	12.13lb	0.26mm	0.26mm
	12lb	14.5lb	0.29mm	0.29mm
	14lb	16.3lb	0.32mm	0.32mm
	16lb	19.75lb	0.34mm	0.34mm
	20lb	24.75lb	0.40mm	0.38mm

MAKE OF LINE	Stated Strain	Average Strain	Stated Diameter	Measured Diameter
<b>Gold Label Pro Gold</b>	8lb	11.38lb	0.28mm	0.27mm
	10lb	11.88lb	0.305mm	0.29mm
	12lb	17.5lb	0.355mm	0.35mm
	15lb	22lb	0.38mm	0.38mm
<b>Gold Label Pro Distance</b>	10lb	15.13lb	0.30mm	0.29mm
	12lb	18.75lb	0.35mm	0.34mm
	15lb	17.63lb	0.38mm	0.38mm
<b>Gold Label Pro Tough</b>	27lb	30.08lb	0.47mm	0.48mm
	36lb	23.49lb	0.51mm	0.51mm
<b>Guru Drag-Line</b>	4lb	6.07lb	0.20mm	0.19mm
	6lb	8.22lb	0.25mm	0.24mm
	8lb	12.46lb	0.28mm	0.29mm
	10lb	11.92lb	0.30mm	0.30mm
<b>Guru Pulse Pro</b>	5.3lb	4.13lb	0.182mm	0.17mm
	6.1lb	6.38lb	0.205mm	0.20mm
	8.8lb	8.83lb	0.247mm	0.24mm
	10.2lb	10.09lb	0.279mm	0.27mm
<b>Katran Synapse Carp Line</b>	18lb	12.5lb	0.331mm	0.32mm
	22.35lb	18.65lb	0.37mm	0.36mm
<b>Katran Synapse Eclipse 1000m</b>	15.55lb	16.04lb	0.309mm	0.31mm
	17.85lb	17.65lb	0.331mm	0.33mm
<b>Katran Synapse Wild Carp</b>	15.5lb	16.25lb	0.328mm	0.33mm
	20.5lb	19.95lb	0.365mm	0.36mm
<b>Korda Adrena-Line</b>	10lb	11.75lb	0.30mm	0.30mm
	12lb	13.25lb	0.33mm	0.33mm
	15lb	15.63lb	0.35mm	0.36mm
	18lb	17.63lb	0.38mm	0.39mm
<b>Korda Basix Main Line</b>	12lb	18.44lb	0.35mm	0.36mm
	15lb	19.55lb	0.40mm	0.40mm
<b>Korda Carp Line</b>	8lb	11.02lb	0.28mm	0.26mm
	10lb	11.92lb	0.3mm	0.28mm
	12lb	13.29lb	0.35mm	0.33mm
	15lb	17.58lb	0.4mm	0.38mm
	20lb	21.07lb	0.43mm	0.41mm
<b>Korda Kruiser Control</b>	6lb	9.38lb	0.25mm	0.24mm
	8lb	11.75lb	0.28mm	0.28mm
	10lb	11.25lb	0.30mm	0.29mm
	12lb	16.25lb	0.33mm	0.33mm
<b>Korda LongChuck Clear 1000m</b>	12lb	11.78lb	0.30mm	0.30mm
	15lb	13.93lb	0.33mm	0.32mm
	17lb	16.41lb	0.35mm	0.35mm
	20lb	19.85lb	0.40mm	0.40mm
<b>Korda Subline Brown</b>	10lb	13.5lb	0.30mm	0.30mm
	12lb	17.13lb	0.35mm	0.36mm
	15lb	19.25lb	0.40mm	0.40mm
	20lb	22lb	0.43mm	0.43mm
<b>Korda Subline Green</b>	10lb	12.88lb	0.30mm	0.29mm
	12lb	17.88lb	0.35mm	0.35mm
	15lb	18.88lb	0.40mm	0.39mm
	20lb	22.38lb	0.43mm	0.42mm

### DISCONTINUED PRODUCTS

Products highlighted in yellow are either discontinued by the supplier or no longer stocked by us, however, we feel that these results could be a good comparison reference for you.

# NYLON MAIN LINES Continued

MAKE OF LINE	Stated Strain	Average Strain	Stated Diameter	Measured Diameter
<b>Korda Touchdown Sub Brown</b>	10lb	12.81lb	0.30mm	0.29mm
	12lb	17.13lb	0.35mm	0.34mm
	15lb	19.97lb	0.40mm	0.40mm
<b>Korda Touchdown Sub Green</b>	10lb	15.17lb	0.30mm	0.30mm
	12lb	16.96lb	0.35mm	0.35mm
	15lb	22.83lb	0.40mm	0.40mm
<b>Krystonite</b>	8lb	8.62lb	0.25mm	0.24mm
	10lb	13.62lb	0.29mm	0.28mm
	12lb	13.75lb	0.31mm	0.30mm
	15lb	16.12lb	0.36mm	0.35mm
	18lb	22.5lb	0.41mm	0.40mm
<b>Nash Bullet Mono Brown</b>	12lb	13.65lb	0.33mm	0.33mm
	15lb	17.38lb	0.37mm	0.37mm
	20lb	22.27lb	0.40mm	0.40mm
<b>Nash Armourline Super Strong Mono</b>	12lb	13.31lb	0.3mm	0.29mm
	15lb	17.23lb	0.35mm	0.34mm
	20lb	22.41lb	0.40mm	0.40mm
	25lb	22.89lb	0.45mm	0.44mm
<b>Nash Bullet Mono Green</b>	12lb	13.53lb	0.33mm	0.33mm
	15lb	16.79lb	0.37mm	0.36mm
	20lb	19.40lb	0.40mm	0.39mm
<b>Nash Hardcore Brown</b>	10lb	9.05lb	0.28mm	0.27mm
	12lb	9.65lb	0.30mm	0.29mm
	15lb	13.54lb	0.35mm	0.34mm
<b>Nash NXT D-Cam Mono</b>	12lb	18.38lb	0.35mm	0.34mm
	15lb	21.25lb	0.38mm	0.39mm
	18lb	24.88lb	0.43mm	0.43mm
<b>Nash Skyline Mono</b>	8lb	10.47lb	0.26mm	0.26mm
	10lb	13.00lb	0.28mm	0.28mm
	12lb	16.89lb	0.30mm	0.31mm
	15lb	23.59lb	0.35mm	0.37mm
<b>Nash Zig Flo</b>	8lb	7.8lb	0.23mm	0.22mm
	10lb	11.25lb	0.28mm	0.27mm
	12lb	10.61lb	0.30mm	0.29mm
<b>PB Products Control Mono 1250m</b>	18lb	11.83lb	0.30mm	0.29mm
	24lb	16lb	0.35mm	0.35mm
<b>Prologic Mimicry Interceptor Jungle</b>	15lb	13.37lb	0.309mm	0.29mm
	17lb	13.07lb	0.331mm	0.31mm
	20lb	15.88lb	0.37mm	0.35mm

MAKE OF LINE	Stated Strain	Average Strain	Stated Diameter	Measured Diameter
<b>Prologic Mimicry Interceptor Urban</b>	15lb	14.09lb	0.309mm	0.29mm
	17lb	15.11lb	0.331mm	0.32mm
	20lb	16.06lb	0.37mm	0.35mm
<b>Prologic XLNT Camo HP</b>	12lb	13.18lb	0.28mm	0.28mm
	14lb	14.27lb	0.30mm	0.30mm
	16lb	15.38lb	0.33mm	0.34mm
<b>RidgeMonkey Monocast Mono 1000m</b>	12lb	10.88lb	0.30mm	0.29mm
	15lb	16.37lb	0.35mm	0.34mm
	20lb	21.46lb	0.40mm	0.39mm
	12lb	13.7lb	0.35mm	0.36mm
<b>RidgeMonkey RM-Tec Mono Brown</b>	15lb	18.39lb	0.38mm	0.41mm
	18lb	23.03lb	0.42mm	0.46mm
	12lb	13.85lb	0.35mm	0.35mm
<b>RidgeMonkey RM-Tec Mono Clear</b>	15lb	19.85lb	0.38mm	0.43mm
	18lb	22.38lb	0.42mm	0.45mm
	12lb	14.93lb	0.35mm	0.36mm
<b>RidgeMonkey RM-Tec Mono Green</b>	15lb	18.6lb	0.38mm	0.41mm
	18lb	22.92lb	0.42mm	0.45mm
	12lb	11.29lb	0.291mm	0.28mm
<b>Rig Marole FLX</b>	15lb	15.02lb	0.304mm	0.3mm
	18lb	16.76lb	N/A	0.32mm
	12lb	14.36lb	0.33mm	0.32mm
<b>Solar South Westerly Uni Mono</b>	15lb	15.17lb	0.37mm	0.36mm
	18lb	19.50lb	0.40mm	0.40mm
	12lb	16.48lb	0.32mm	0.33mm
<b>Solar South Westerly Pro Bulletproof Mono</b>	15lb	15.79lb	0.35mm	0.36mm
	18lb	20.97lb	0.39mm	0.39mm
	11lb	14.28lb	0.31mm	0.32mm
<b>Solar SP Mile High Mono</b>	14lb	14.53lb	0.34mm	0.33mm
	17lb	19.53lb	0.37mm	0.36mm
	20lb	20.16lb	0.40mm	0.39mm
	8lb	14.13lb	0.28mm	0.28mm
<b>Shimano Catana</b>	10lb	16lb	0.30mm	0.30mm
	12lb	18.88lb	0.33mm	0.33mm
	15lb	20.5lb	0.35mm	0.35mm
	26.4lb	18.71lb	0.355mm	0.38mm
<b>Shimano Technium Invisitec</b>				

MAKE OF LINE	Stated Strain	Average Strain	Stated Diameter	Measured Diameter
<b>Shimano Tribal Carp</b>	10lb	13.41lb	0.305mm	0.26mm
	12lb	15.72lb	0.33mm	0.32mm
	15lb	19.52lb	0.38mm	0.39mm
<b>TF Gear Nan-Tec Mono Red Mist</b>	12lb	12lb	0.30mm	0.27mm
	15lb	16.62lb	0.35mm	0.34mm
<b>Thinking Anglers OGX Copolymer Main Line 1000m</b>	12lb	16.44lb	0.33mm	0.33mm
	15lb	18.74lb	0.35mm	0.35mm
	18lb	17.67lb	0.37mm	0.38mm
	20lb	22.77lb	0.40mm	0.40mm
<b>Ultima Power Carp Clear</b>	10lb	14.38lb	0.28mm	0.29mm
	12lb	17.50lb	0.31mm	0.31mm
	14lb	19.63lb	0.33mm	0.34mm
	16lb	22lb	0.36mm	0.38mm
<b>Ultima Power Carp Green</b>	18lb	27.25lb	0.38mm	0.42mm
	12lb	17.50lb	0.31mm	0.31mm
	14lb	19.63lb	0.33mm	0.34mm
<b>Ultima Power Carp Green</b>	16lb	22lb	0.36mm	0.38mm
	12lb	14.38lb	0.31mm	0.31mm
	14lb	9lb	0.33mm	0.33mm
<b>Ultima Power Carp Ultra</b>	16lb	10.88lb	0.36mm	0.38mm
	18lb	13.63lb	0.38mm	???????
	12lb	11.73lb	0.31mm	0.30mm
<b>Ultima Power Carp XR</b>	14lb	15.53lb	0.33mm	0.36mm
	16lb	16.35lb	0.36mm	0.37mm
	10lb	10.78lb	0.28mm	0.29mm
<b>Ultima Zero</b>	12lb	12.80lb	0.30mm	0.31mm
	14lb	14.41lb	0.32mm	0.32mm
	16lb	14.42lb	0.35mm	0.36mm
	10lb	11.97lb	0.28mm	0.3mm
<b>Wychwood DPF</b>	12lb	11.99lb	0.3mm	0.32mm
	15lb	12.59lb	0.32mm	0.34mm
	18lb	16.42lb	0.35mm	0.36mm

## DISCONTINUED PRODUCTS

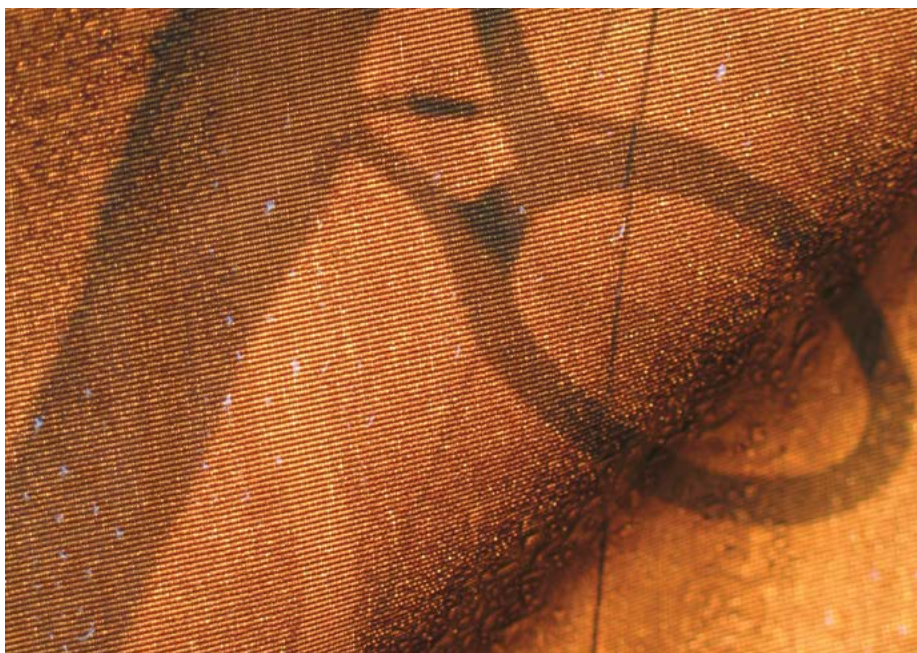
Products highlighted in yellow are either discontinued by the supplier or no longer stocked by us, however, we feel that these results could be a good comparison reference for you.

## FLUOROCARBON MAIN LINES

A monofilament line is made from fluorocarbon; there are many variations of fluorocarbon lines that have different properties.

**PROPERTIES: Fluorocarbon v nylon:** 80% Heavier - Not a distance casting line - Less visible in water - More abrasion resistant - Virtually no water absorbency - UV resistant - Less stretch - Be vigilant when tying knots - More durable, will last longer before needing to be replaced - More expensive.

MAKE OF LINE	Stated Strain	Average Strain	Stated Diameter	Measured Diameter
<b>Berkley Super Strong 100% Fluorocarbon</b>	12lb 15lb 17lb	13lb 14.5lb 14.88lb	0.33mm 0.381mm Unstated	0.33mm 0.365mm 0.38mm
<b>Berkley Connect CF600</b>	12lb 15lb	11.64lb 11.66lb	0.34mm 0.38mm	0.31mm 0.3mm
<b>Daiwa Floorit Brown</b>	10lb 12lb 14lb 17lb	9.26lb 10.55lb 14.13lb 16.08lb	0.27mm 0.31mm 0.33mm 0.37mm	0.26mm 0.28mm 0.34mm 0.38mm
<b>Daiwa Floorit Clear</b>	12lb 14lb 17lb	11.09lb 13.14lb 16.08lb	0.31mm 0.33mm 0.37mm	0.28mm 0.34mm 0.38mm
<b>Daiwa Infinity Floorit Super Soft Clear</b>	15lb 18lb 20lb	12.36lb 14.87lb 17.31lb	0.33mm 0.35mm 0.39mm	0.31mm 0.34mm 0.38mm
<b>Fox Illusion®</b>	16lb 19lb	13.01lb 16.26lb	0.30mm 0.35mm	0.34mm 0.38mm
<b>Gardner Mirage</b>	12lb 14lb 16lb	11.75lb 12.88lb 13.38lb	0.33mm 0.35mm 0.37mm	0.33mm 0.35mm 0.36mm
<b>Korda Kontour</b>	12lb 15lb 18lb	11.5lb 11.36lb 14.39lb	0.33mm 0.35mm 0.37mm	0.31mm 0.34mm 0.37mm
<b>RidgeMonkey FluoroCast 1000m</b>	15lb 18lb	12.72 15.70	0.33mm 0.37mm	0.32mm 0.37mm
<b>RidgeMonkey RM-Tec Fluoro</b>	15lb 20lb	15.4lb 17.71lb	0.33mm 0.37mm	0.35mm 0.39mm
<b>Taska Deceptive</b>	16lb 20lb	10.66lb 14.95lb	0.33mm 0.37mm	0.34mm 0.38mm
<b>TF Gear Secret Trap</b>	17lb	13.38lb	0.35mm	0.35mm
<b>Thinking Anglers FTX</b>	14lb 16lb	13.27mm 14.51mm	0.35mm 0.37mm	0.35mm 0.37mm
<b>Ultima Pure Power Fluorocarbon Clear</b>	12lb 14lb 16lb	9.38lb 10.75lb 11.5lb	0.30mm 0.32mm 0.35mm	0.30mm 0.32mm 0.35mm
<b>Ultima Pure Power Fluorocarbon Green</b>	12lb 14lb 16lb	8.25lb 10.5lb 13lb	0.30mm 0.32mm 0.35mm	0.30mm 0.32mm 0.35mm
<b>X Line</b>	12lb 15lb 17lb 20lb	9.38lb 10.25lb 11.13lb 12.63lb	0.26mm 0.31mm 0.33mm 0.37mm	0.28mm 0.29mm 0.31mm 0.35mm
<b>X2 Secure</b>	15lb 20lb	13.82lb 15.14lb	0.30mm 0.35mm	0.31mm 0.34mm



### DISCONTINUED PRODUCTS

Products highlighted in yellow are either discontinued by the supplier or no longer stocked by us, however, we feel that these results could be a good comparison reference for you.

## BRAIDED MAIN LINES

When referring to braid, it is pure polyethylene braid which is the thinnest, strongest fibre available, this also known under other names such as PE, Spectra or Dyneema(r). However, PE can be blended with other fibres such as nylon, polyester, Gore-Tex to create specialist braids with properties that can suit different situations.

**PROPERTIES: Pure polyethylene braid (PE) v monofilaments:** Lighter - With a density of 0.97 it floats on water - Excellent distance casting line - Easily produces wind knots during casting if not managed correctly, always wind on spool tightly at all times - Not abrasion resistant - Virtually no water absorbency - UV resistant - Virtually no stretch - Be vigilant when tying knots - Needs to be replaced less frequently - Expensive

MAKE OF LINE	Stated Strain	Average Strain	Stated Diameter	Measured Diameter
Avid Carp Depth Charge Marker Braid	40lb	17.63lb	0.10mm	0.26mm
Avid Carp Extremity Marker Braid	25lb	17.56lb	0.23mm	0.31mm
Avid Carp Extremity Spod Braid	25lb	22.28lb	0.23mm	0.31mm
Avid Carp Outline Camo Braided Mainline 600m	30lb	21.82lb	0.25mm	0.31mm
Berkley Fireline Braid	14lb 20lb 30lb	21.38lb 26.38lb 38.13lb	0.23mm 0.30mm 0.36mm	0.28mm 0.34mm 0.43mm
Berkley Fireline Tournament Exceed	14lb 20lb 30lb	21lb 24.88lb 38.13lb	0.23mm 0.30mm 0.36mm	0.26mm 0.33mm 0.43mm
Berkley Fireline Ultra 8 Carrier Smoke	24lb	9.06lb	0.17mm	0.21mm
Berkley Nanofil	12.64kg (28lb)	12lb	0.20mm	0.23mm
Berkley Whiplash Braid	20lb 30lb 50lb	15.88lb 17.63lb 29.31lb	0.06mm 0.10mm 0.17mm	0.20mm 0.26mm 0.31mm
Berkley Whiplash 8 Braid Green	24lb 32.6lb 50.4lb	15.35lb 20.34lb 29.15lb	0.06mm 0.10mm 0.18mm	0.18mm 0.27mm 0.33mm
Berkley Whiplash 8 Braid Yellow	32.6lb	17.31lb	0.10mm	0.26mm
Berkley Connect CB2000	35lb	22.27lb	0.22mm	0.26mm
Daiwa J-Braid x 4 Dark Green	32lb 50lb	23.98lb 47.23lb	0.25mm 0.33mm	0.32mm 0.41mm
Daiwa J-Braid x 4 Yellow	32lb	17.09lb	0.25mm	0.33mm
Daiwa J-Braid x 8 Dark Green	29lb 37.5lb 40lb 58lb 79lb	16.79lb 20.27lb 24.49lb 28.77lb 44.41lb	0.25mm 0.25mm 0.32mm 0.37mm 0.50mm	0.22mm 0.23mm 0.31mm 0.34mm 0.48mm

MAKE OF LINE	Stated Strain	Average Strain	Stated Diameter	Measured Diameter
Daiwa Tournament 8 Braid	50lb	26lb	0.26mm	0.26mm
Dynon SK Braid	22lb 34lb	19.88lb 27.25lb	Unstated	0.30mm 0.39mm
E+S+P Spod & Marker Braid	20lb	18.88lb	0.28mm	0.28mm
Faith OctoX 8	25lb 30lb 40lb	17.20lb 19.19lb 24.91lb	0.16mm 0.20mm 0.25mm	0.25mm 0.30mm 0.34mm
Fox Exocet Distance Spod & Marker Braid	23lb	13.5lb	0.18mm	0.24mm
Fox Exocet MK2 Marker Braid	20lb	10.23lb	0.18mm	0.24mm
Fox Exocet MK2 Spod Braid	20lb	15.32mm	0.18mm	0.24mm
Fox Submerge®	25lb 40lb 55lb	19.10lb 25.58lb 34.39lb	0.16mm 0.20mm 0.3mm	0.31mm 0.33mm 0.36mm
Fox Spomb XD Pro Braid Grey	16 24	9.06lb 13.51lb	0.14mm 0.18mm	0.16mm 0.24mm
Fox Soft Steel - Camo Fleck	16 18 20	15.78lb 16.19lb 18.35lb	0.33mm 0.35mm 0.37mm	0.32mm 0.35mm 0.37mm
Fox Gravitron Pro	15lb 20lb 25lb	13.88lb 18.13lb 21.37lb	0.30mm 0.35mm 0.40mm	0.31mm 0.37mm 0.38mm
Gardner Hydro Sink Noir	25lb	30.47lb	0.35mm	0.43mm
Gardner Kinetic	15lb 20lb 30lb 40lb	20.4lb 20.42lb 28.33lb 33.42lb	0.23mm 0.27mm 0.34mm 0.36mm	0.30mm 0.31mm 0.36mm 0.45mm
Korda Apex	30lb 50lb	24.5lb 33.30lb	0.23mm 0.36mm	0.33mm 0.38mm
Korda Marker Braid	20lb	13.39lb	0.16mm	0.24mm
Korda Spod Braid	20lb	13.93lb	0.16mm	0.23mm
Korda Sub Braid	15lb 20lb	19.47lb 21.52lb	0.30mm 0.34mm	0.33mm 0.36mm
Nash Baseline Sinking Braid Camo	20lb 25lb 30lb 40lb	15.04lb 18.41lb - 25.35lb	0.20mm 0.24mm - 0.35mm	0.25mm 0.24mm - 0.35mm

MAKE OF LINE	Stated Strain	Average Strain	Stated Diameter	Measured Diameter
Nash Bullet Braid	15lb 20lb 25lb	19.5lb 20.63lb 22.63lb	0.30mm 0.35mm 0.40mm	0.32mm 0.34mm 0.34mm
Nash Highline Extra	40lb	25.16lb	0.35mm	0.36mm
Nash NXT Bullet Braid	15lb 20lb 25lb	18.13lb 23.63lb 26.63lb	0.23mm 0.30mm 0.34mm	0.30mm 0.35mm 0.38mm
PB Products Gator Braid 1000m	30lb	22.21lb	0.30mm	0.27mm
Power Pro Braid	66lb	33.23lb	0.36mm	0.38mm
RidgeMonkey Descend Sinking Braid Mainline	20lb	20.22lb	0.28mm	0.27mm
RidgeMonkey Descend Sinking Braid Mainline	30lb	31.97lb	0.35mm	0.42mm
RidgeMonkey RM-Tec Braided Mainline	20lb 30lb	16.61lb 23.32lb	0.28mm 0.357mm	0.30mm 0.40mm
RidgeMonkey RM-Tec Transmit Spod & Marker Braid	25lb	26.19lb	0.28mm	0.33mm
Spiderwire Ultracast Fluoro Braid	20lb 30lb	19lb 23.63lb	0.25mm 0.30mm	0.27mm 0.31mm
Spomb Braid	20lb	16.04lb	0.18mm	0.21mm
TF Gear Banana Braid	30lb 50lb	24lb 30.67lb	0.28mm N/A	0.24mm 0.36mm
Thinking Anglers SBX Sinking Braid 300m	40lb	30.47lb	0.34mm	0.49mm
Thinking Anglers SBX Sinking Braided Main Line	25lb	23.60lb	0.40mm	0.38mm
Ultima Vertibraid	20lb 30lb	20lb 27.75lb	Unstated	0.25mm 0.34mm
X2 Durabraid	31.5lb (14.3kg) 37lb (16.8kg) 42lb (19.3kg) 42.5lb (19.3kg)	21lb 24lb 27lb 27lb	0.20mm 0.25mm 0.30mm 0.30mm	0.24mm 0.32mm 0.35mm 0.35mm

### DISCONTINUED PRODUCTS

Products highlighted in yellow are either discontinued by the supplier or no longer stocked by us, however, we feel that these results could be a good comparison reference for you.